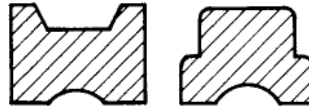


Mast Guide Type

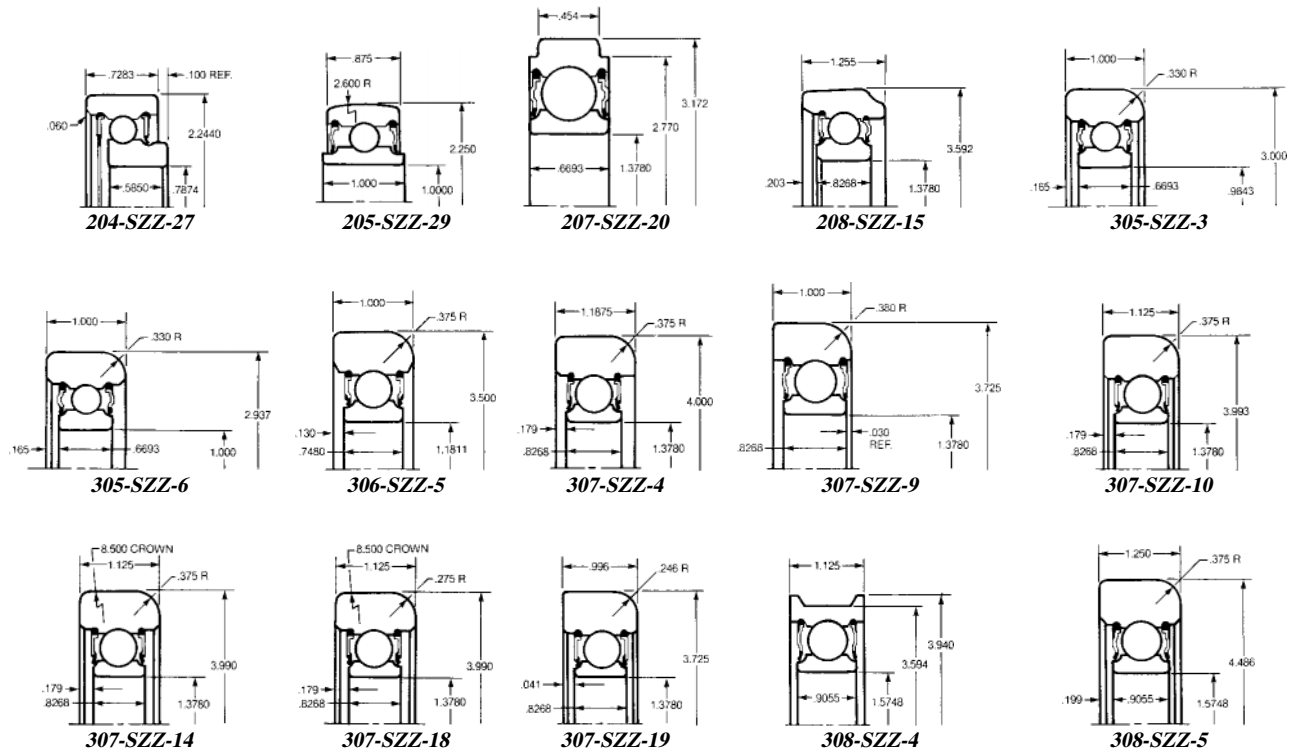


Chain Sheave Type

Outer Ring Design

Industrial truck mast guide ball bearings are a family of special bearings tailored to meet the requirements of the industrial truck industry. These bearings must be able to accommodate heavy radial loads, withstand heavy shock loads, and handle overturning moments produced by combined radial and thrust loads.

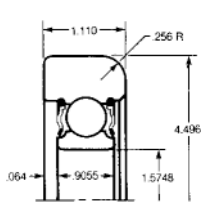
Special lubricants are selected to meet the rigorous demands of industrial truck service. To retain the lubricant and protect the bearing from adverse environmental conditions, the bearings are equipped with either synthetic rubber or polypropylene seals.



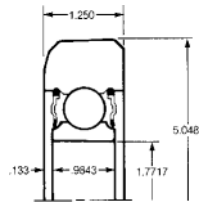
MRC Bearing Number	Basic Radial Load Rating ¹⁾						Basic Interchange ²⁾					
	ZD ²		Dynamic C ²⁾		Static C ₀		SKF	BCA	Hoover/NSK	McGill	NDH	Split
	mm	in	N	lbf	N	lbf						
204SZZ27	459	.71	18 600	4 180	65 500	14 700	BNTB316574	—	—	—	—	—
205SZZ29	610	.95	15 300	3 440	8 150	1 830	—	—	—	—	—	—
207SZZ20	1 110	1.72	25 500	5 730	15 300	3 440	—	—	—	—	—	—
208SZZ15	1 450	2.25	52 700	11 800	216 000	48 600	—	MG207FFH	—	BB1705	—	TB104
305SZZ3	852	1.32	33 800	7 600	122 000	27 400	—	MG305DD	X421	BB849	ZMG605ATY1Z8	—
305SZZ6	852	1.32	20 800	6 770	11 200	2 520	—	MG305DDA	—	—	—	—
306SZZ5	1 290	2.00	48 800	10 970	18 000	40 500	361885	MG306DD	X555	—	—	—
307SZZ4	1 590	2.47	60 500	13 600	216 000	48 600	—	—	—	—	—	—
307SZZ9	1 590	2.47	60 500	13 600	216 000	48 600	—	MG307FFK	X549RS	—	—	—
307SZZ10	1 590	2.47	60 500	13 600	216 000	48 600	360858C	MG307FF	X3762S	BB816	Z99607BTY1Z8	—
307SZZ14	1 590	2.47	60 500	13 600	216 000	48 600	—	—	—	—	—	—
307SZZ18	1 590	2.47	60 500	13 600	216 000	48 600	—	—	—	—	—	—
307SZZ19	1 590	2.47	60 500	13 600	216 000	48 600	—	—	—	—	—	—
308SZZ4	2 020	3.13	72 800	16 400	280 000	62 900	—	—	—	—	—	—
308SZZ5	2 020	3.13	72 800	16 400	280 000	62 900	362480	EX4989	—	BB1747	—	—

¹⁾ Ratings shown have values modified to reflect raceway curvatures less than a total of 54%.

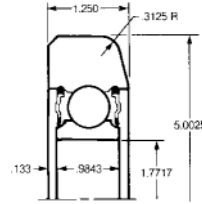
²⁾ Rating for one million revolutions or 500 hours at 33 1/3 RPM.



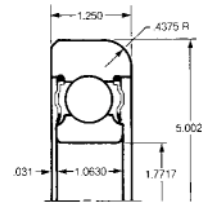
308-SZZ-6



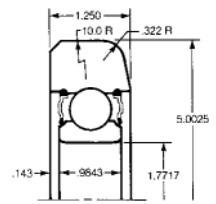
309-SZZ-1



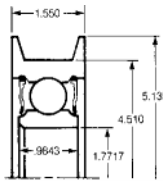
309-SZZ-4



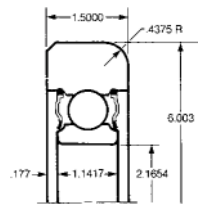
309-SZZ-5



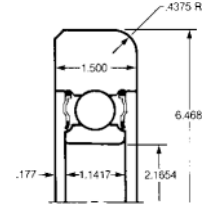
309-SZZ-9



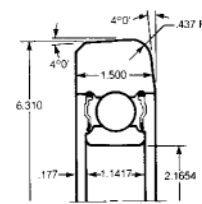
309-SZZ-12



311-SZZ-1



311-SZZ-2



311-SZZ-5

MRC Bearing Number	Basic Radial Load Rating ¹⁾						Basic Interchange					
	ZD ²		Dynamic C ²⁾		Static C ₀		SKF	BCA	Hoover/NSK	McGill	NDH	Split
	mm	in	N	lbf	N	lbf						
308SZZ6	2 020	3.13	72 800	16 400	280 000	62 900	—	—	—	—	—	—
309SZZ1	2 440	3.78	87 100	19 600	345 000	77 600	—	MG309DD	—	BB850	—	—
309SZZ4	2 440	3.78	87 100	19 600	345 000	77 600	—	MG309DDA	X501RS	BB1652	ZMG609XRY1Z8	—
309SZZ5	2 900	4.50	81 900	18 400	275 000	61 800	—	—	—	—	—	—
309SZZ9	2 440	3.78	87 100	19 600	345 000	77 600	—	—	—	—	—	—
309SZZ12	2 440	3.78	87 100	19 600	345 000	77 600	—	—	—	—	—	—
311SZZ1	3 410	5.28	71 500	16 100	44 000	9 890	—	—	—	BB16493	—	—
311SZZ2	3 410	5.28	72 800	16 400	325 000	73 100	—	—	—	—	—	—
311SZZ5	3 410	5.28	72 800	16 400	325 000	73 100	—	—	—	—	—	—

¹⁾ Ratings shown have values modified to reflect raceway curvatures less than a total of 54%.

²⁾ Rating for one million revolutions or 500 hours at 33 1/3 RPM.

Original Equipment Manufacturers Part Number Reference Guide

Original Equip. Part Number	MRC Bearing Number	Original Equip. Part Number	MRC Bearing Number	Original Equip. Part Number	MRC Bearing Number
Allis Chalmers					
1001732	208-SZZ-15				
1002841-02	5309-BZZ-1				
1005603	309-SZZ-4				
4756413	5206-BKFF-1				
4769905	5306-BZZ-1				
4774102	5108-BZZ-1				
4797550	5209-BZZ-1				
4798050	5210-BZZ-1				
4803599	5109-BZZ-2				
4803665	5109-BZZ-1				
4812920	307-SZZ-9				
4817265	207-SZZ-20				
4820659	309-SZZ-4				
4832744	311-SZZ-2				
4842106	5209-BZZ-2				
4859065	5109-BZZ-3				
4863104	5309-RZZ-1				
48206693	309-SZZ-4				
71005603	309-SZZ-4				
8612154	311-SZZ-5				
American Manufacturing Co.					
305-SZZ-3	305-SZZ-3				
305-SZZ-6	305-SZZ-6				
307-SZZ-10	307-SZZ-10				
309-SZZ-4	309-SZZ-4				
Arrow Fork Lift					
35A11111	307-SZZ-8				
305-SZZ-3	305-SZZ-3				
306-SZZ-5	306-SZZ-5				
307-SZZ-10	307-SZZ-10				
309-SZZ-1	309-SZZ-1				
309-SZZ-4	309-SZZ-4				
5108-BZZ-1	5108-BZZ-1				
5208-BTZ-1	5208-BTZ-1				
185531	208-SZZ-16				
746623	305-SZZ-3				
789401	308-SZZ-1				
4812920	307-SZZ-9				
Baker Material Handling					
102916	206-SZZ-16				
104744	309-SZZ-4				
105475	306-SZZ-5				
105476	204-SZZ-20				
120891	307-SZZ-10				
504001	307-SZZ-10				
504002	309-SZZ-4				
Barrett Electronics					
A10650	5306-BZZ-1				
A27690-2	307-SZZ-10				
Caterpillar Tractor					
091132	307-SZZ-14				
308918	305-SZZ-3				
314046	309-SZZ-9				
314047	309-SZZ-1				
346114	308-SZZ-4				
371202	307-SZZ-18				
Clark Equipment					
342957	307-SZZ-10				
665619	208-SZZ-9				
738752-J	309-SZZ-1				
746623	305-SZZ-3				
746624	307-SZZ-10				
996829	307-SZZ-10				
1654614	309-SZZ-4				
1695854	306-SZZ-5				
1697663	311-SZZ-1				
1764714	5316-SZZ-1				
2306335	307-SZZ-11				
2306336	305-SZZ-7				
2326653	308-SZZ-5				
2357128	309-SZZ-12				
2357723	308-SZZ-6				
2359625	204-SZZ-27				
2359446	5309-BZZ-2				
2359447	5307-BZZ-1				
Criterion Engineering Ltd.					
205-SZZ-29	205-SZZ-29				
305-SZZ-6	305-SZZ-6				
309-SZZ-4	309-SZZ-4				
Crown Controls					
74020-B	305-SZZ-3				
74668-1	307-SZZ-10				
79943	309-SZZ-4				
Dyna-Power Corporation					
R1	307-SZZ-10				
Eaton Corporation					
260100-18-001-00	307-SZZ-16				
Fiat-Allis					
74820659	309-SZZ-4				
74832744	311-SZZ-2				
Hyster					
87905	307-SZZ-10				
89219	5205-BKZZ-1				
129002	5206-BKZZ-1				
143493	5208-BKT-1				
185530	208-SZZ-15				
185531	208-SZZ-16				
186711	5208-BTT-2				
193557	5208-BTZ-1				
212956	307-SZZ-10				
231020	5207-BKZZ-1				
K-D Manufacturing Co.					
R2	309-SZZ-4				
R-186	5309-RZZ-1				
R 5182	308-SZZ-4				
307-SZZ-10	307-SZZ-10				
309-SZZ-1	309-SZZ-1				
Knickerbocker Co.					
30451	307-SZZ-10				
30487	305-SZZ-3				
30719	309-SZZ-4				
Massey Ferguson					
311-SZZ-1	311-SZZ-1				
672896M1	309-SZZ-1				
Pettibone Corporation					
31486	206-SZZ-16				
F11201	307-SZZ-10				
Pettibone-Mercury					
30076	206-SZZ-16				
33569	309-SZZ-4				
33799	307-SZZ-10				
Petti-Mulliken					
F11205	307-SZZ-10				
P45900	309-SZZ-4				
Raymond					
449033	309-SZZ-4				
Schreck					
31-42014	307-SZZ-10				
31-42015	309-SZZ-4				
31-43450	305-SZZ-3				
Taylor Machine Works					
309-SZZ-1	309-SZZ-1				
Towmotor Corporation See Caterpillar Tractor					
White Farm Equipment					
20-3004059	309-SZZ-5				
White Material Handling					
35A11111	307-SZZ-8				
35A12631	307-SZZ-10				
Wiggins Lift Co.					
307-SZZ-10	307-SZZ-10				
309-SZZ-1	309-SZZ-1				
309-SZZ-4	309-SZZ-4				
311-SZZ-1	311-SZZ-1				
311-SZZ-2	311-SZZ-2				