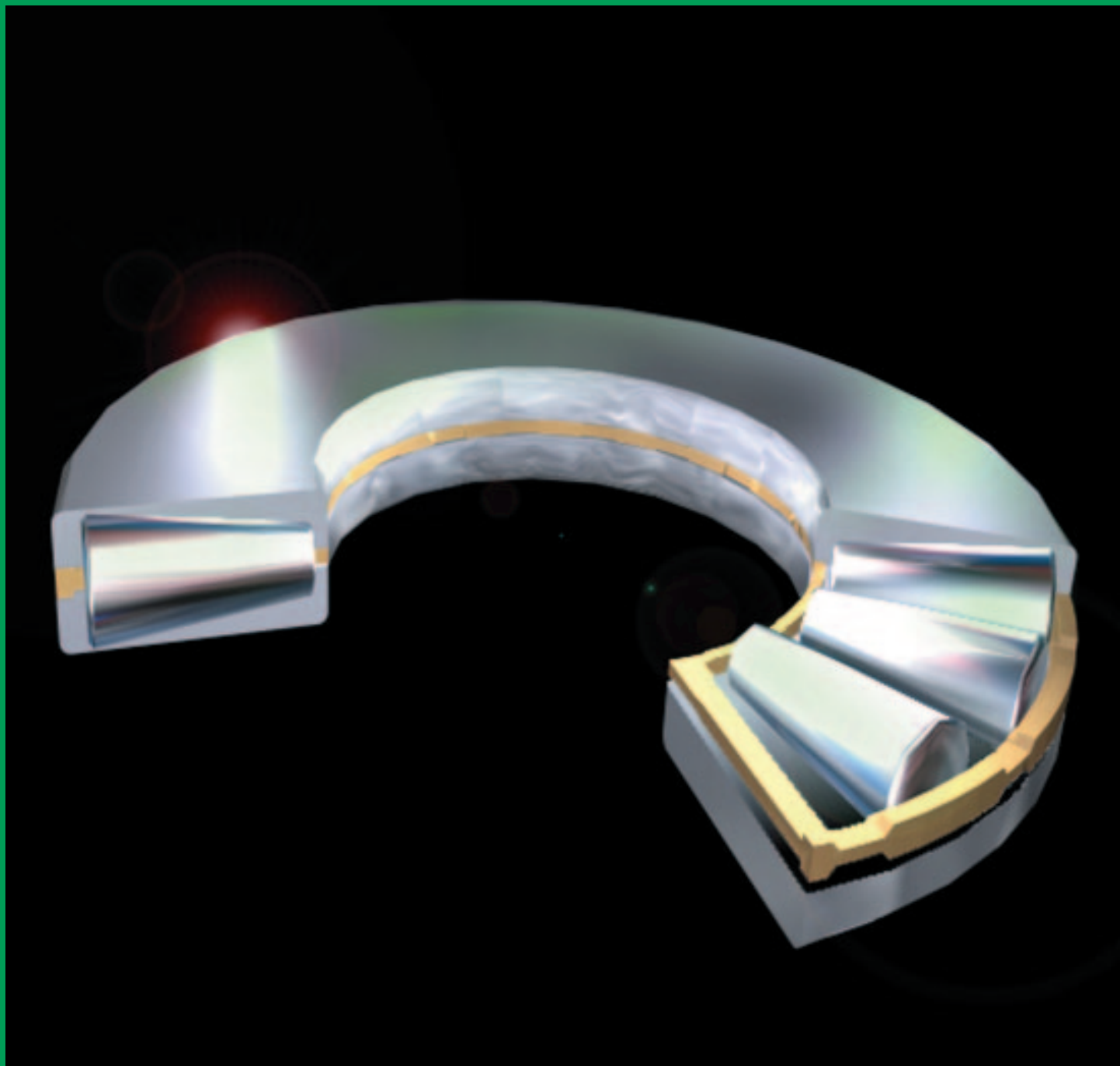


ROLLWAY

TAPERED ROLLER THRUST BEARINGS



Rollway ruggedness: Tapered Roller Thrust Bearings.



Rollway Tapered Roller Thrust Bearings are engineered for efficiency and longevity under the harshest industrial conditions. These rugged, dependable bearings feature true rolling motion, with the vertex of the conical sections meeting at the bearing axis.

Rollers are crowned for optimum contact stress patterns, and the large ends of the rollers are spherically ground. This provides controlled contact between the rollers and guide rib, thus

enhancing the flow of lubricant. (And enhancing the life of the bearing.) Both TTHD-Type and T-Flat versions are made in the United States. High-quality, bearing grade case carburizing steel is used for the rollers and plates.

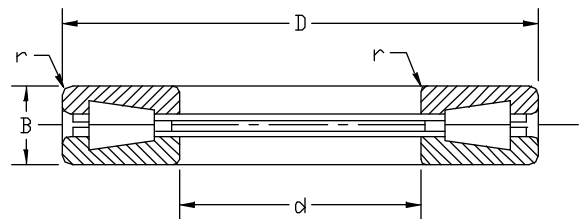
Rollway Tapered Roller Thrust Bearings are used in extruders, oil well swivels, coal crushers, metal rolling mills, pulp refiners and many other heavy-duty applications.

TTHD-Type Thrust Bearings.

These American-made thrust bearings feature tapered rollers positioned between two plates with tapered raceways. Design is structurally rigid, maintaining alignment of both plates. A machined bronze cage keeps all rollers evenly spaced at all times.

TTHD-Type bearings, available in a wide range of sizes, are designed to operate at relatively high speeds. For higher capacity — but lower speed — specialty versions can be produced with a full complement of rollers.

In coal crushers, mill screw-down applications and other heavy-duty jobs, Rollway TTHD-Type Thrust Bearings are ideal for original equipment, replacement or conversion use.



TTHD-Type Thrust Bearing Specifications

Bearing Number	Bore d inches	O.D. D Inches	Width B Inches	Radius* r Inches	Dynamic Capacity C (lbs)	Static Capacity Co (lbs)
T-411	4.0000	8.5000	1.8125	.13	219,100	762,700
T-511	5.0000	10.5000	2.3125	.19	322,500	1,232,570
T-611	6.0000	12.5000	2.7500	.25	455,125	1,672,410
T-661	6.6250	12.0000	2.7500	.25	382,620	1,323,000
T-691	6.8750	14.1250	3.2500	.25	539,980	2,023,000
T-711	7.0000	14.5000	3.2500	.31	601,700	2,101,000
T-811	8.0000	16.5000	3.6250	.38	752,120	2,879,160
T-911	9.0000	19.0000	4.1250	.44	991,250	3,796,762
T-911A	9.2500	19.0000	4.1250	.44	991,250	3,796,762
T-921	9.2500	21.5000	5.0000	.63	1,361,600	5,346,100
T-1011	10.0000	21.2500	4.6250	.44	1,230,400	4,874,000
T-1120	11.0000	23.7500	5.3750	.44	1,573,660	6,286,210
T-16050	16.0000	33.0000	7.0000	.50	2,877,500	11,295,180

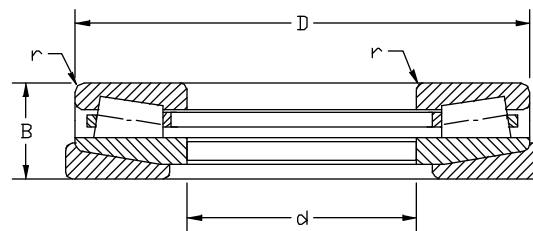
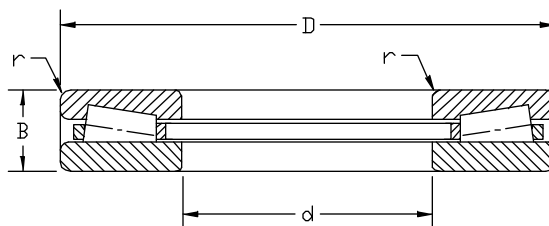
*Radius (r) is maximum shaft or housing fillet that bearing corner will clear.



affecting bearing operation. Maximum capacity is achieved through close spacing of rollers by a steel, "pin-type" cage.

The self-aligning version features a two-piece housing plate with spherically ground contacting surfaces. This design permits self-alignment under conditions of initial location misalignment.

Identification is easy with Rollway T-Flats. The first three digits of the bearing number signify the bore (in inches), and the last three digits signify the O.D. (in inches).



T-Flat Thrust Bearings.

Available in standard (T-F) and self-aligning (T-FS) design, Rollway T-Flat Thrust Bearings offer proven, reliable performance under maximum loads. In metal rolling mill applications, for example, loads routinely exceed 1,000,000 pounds.

Our T-Flat bearings have a complement of tapered rollers positioned between one flat and one tapered raceway. A guide rib on the tapered raceway resists the induced radial force component caused by the incline plane, and the flat plate allows radial displacement without adversely

Standard T-Flat Thrust Bearing Specifications

Bearing Number	Bore d inches	O.D. D Inches	Width B Inches	Radius* r Inches	Dynamic Capacity C (lbs)	Static Capacity Co (lbs)
T-050105-F	5.0000	10.5000	2.3125	.14	292,000	594,600
T-070140-F	7.0000	14.0000	4.5000	.12	523,000	1,243,000
T-072160-F	7.2500	16.0000	8.0000	.24	979,000	1,851,000
T-090190-F	9.0000	19.0000	5.7500	.36	1,326,800	2,473,000
T-101215-F	10.1000	21.5000	6.5000	.24	1,777,000	3,352,000
T-120240-F	12.0000	24.0000	4.5000	.25	1,660,000	3,994,000
T-140260-F	14.0000	26.0000	9.1250	.40	2,219,000	4,467,000
T-170340-F	17.0000	34.0000	9.0000	.40	4,010,000	8,500,000
T-200390-F	20.0000	39.0000	7.7500	.50	3,781,000	9,548,000
T-220420-F	22.0000	42.0000	11.2500	.40	5,890,000	11,300,000

Self-Aligning T-Flat Thrust Bearing Specifications

T-090190-F	9.0000	19.0000	6.2500	.36	1,320,000	2,440,000
T-095192-F	9.5000	19.2500	6.0000	.36	1,120,000	2,240,000
T-100200-F	10.0000	20.0000	8.5000	.24	1,350,000	2,200,000
T-120240-F	12.0000	24.0000	8.5000	.25	2,250,000	4,010,000
T-140260-F	14.0000	26.0000	10.0000	.40	2,490,000	4,180,000
T-160342-F	16.0000	34.2500	9.5000	.40	3,980,000	6,770,000

*Radius (r) is maximum shaft or housing fillet that bearing corner will clear.

Call us today to learn more about these high-performance, heavy-duty bearings. Your Rollway representative can provide all the details and technical information.



Rollway Bearing

Emerson Power Transmission Corp.

P.O. Box 4827, Syracuse, New York 13221

(315) 457-6211

Fax: (315) 451-8596 • Toll-Free: 1-800-448-2260